



Childrens Services Closer to Home October 2021



Gweithio dros Gaerdydd, gweithio gyda'n gilydd
Working for Cardiff, working together



Closer to home



We have a moral duty to place children and young people closer to home. Local placements enable contact with family, consistency of education, friends, social relationships and helps with a sense of identity.

Services are better co-ordinated to meet the needs of children and young people.

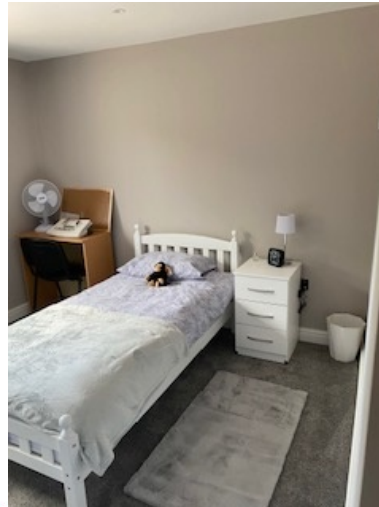


Gweithio dros Gaerdydd, gweithio gyda'n gilydd
Working for Cardiff, working together

New In house developments

Falconwood

- 3 bed unit
- CIW registered August 2021
- 12 week assessment of young persons need
- Multi agency approach
- Reunification home/Foster Care or Residential to meet need
- 3 young people in residence



New in house developments

Oakway

- 3 bed unit
- CIW registration October 2021
- Emergency pop up for out of hours/emergency placement
- Full staff team in place to respond to need



Gweithio dros Gaerdydd, gweithio gyda'n gilydd
Working for Cardiff, working together

New in house developments



Colum Road

- 6 bedroom assessment unit or Unaccompanied Asylum seeking children
- Unregistered – aged 16+ supported living
- Partnership with Salvation Army
- Operational December 2021



Existing In House Development

- Modernisation of:
 - Crosslands Childrens Home



– Ty Storrie Respite Provision

Early stages of design, both schemes with architects

Additional respite units x 2 for those young people with additional learning need



Future Developments

Ambitious programme to develop:

1 x further 3 bed Assessment Centre

2 x 3/4 bed Residential

1 x Edge of Care home

Mixture of privately purchased homes and collaboration with Housing Development Team for opportunities on new housing schemes



Future Developments

Funding

Successful bids via ICF fund for:

Project	ICF £M
Children and Young Persons Assessment Centres	0.455
Accommodation for Edge of Care & Assessments	0.455
Respite & Short Breaks Accommodation	1.150

Together with 1.5M available through capital investment.



Young Persons Gateway



Spend to save bid to increase accommodation options for 16+

4 x 4 bedroom supported accommodation

2 x 4 bedroom delivered and operational

Further 2 units to be delivered in year

Mix of step down from residential and return from out of county



Partnership Working

New provision due to open January/February
2022

Llanishen – 1 x 4 bed

Cyncoed 1 x 4 bed

Planning to ensure we maximise usage subject
to matching



Any questions ?

